

SY235C

Excavator



KEY FEATURES

- Newly designed SANY cab has maximum space, wide visibility and easy access to controls with a full-color monitor providing easy access to machine operation information
- Cummins Tier 3 QSB 6.7, 190 hp engine
- Positive hydraulic control system provides excellent control and high productivity.
- Standard features include two-way auxiliary hydraulics and a pattern-control change valve to increase productivity

SPECIFICATIONS

Power

190 hp / 132 kW

Operating Weight

51,809 lb / 23 500 kg

Dig Depth

22' 4" / 6800 mm

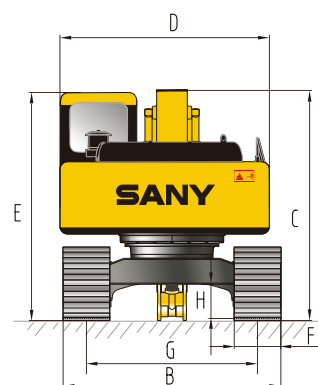
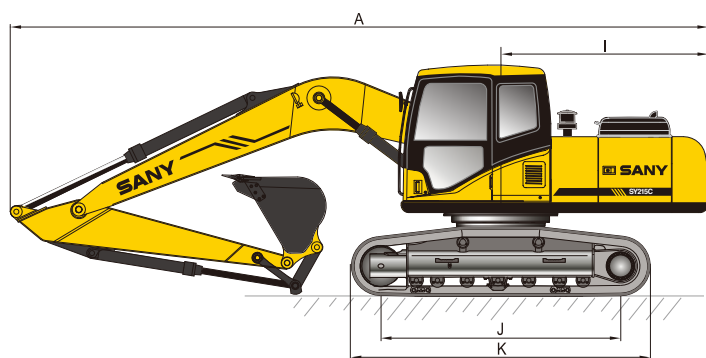
Bucket Breakout

39,340 lbf / 175 kN



SY235C Dimensions & Specifications

Overall Dimensions



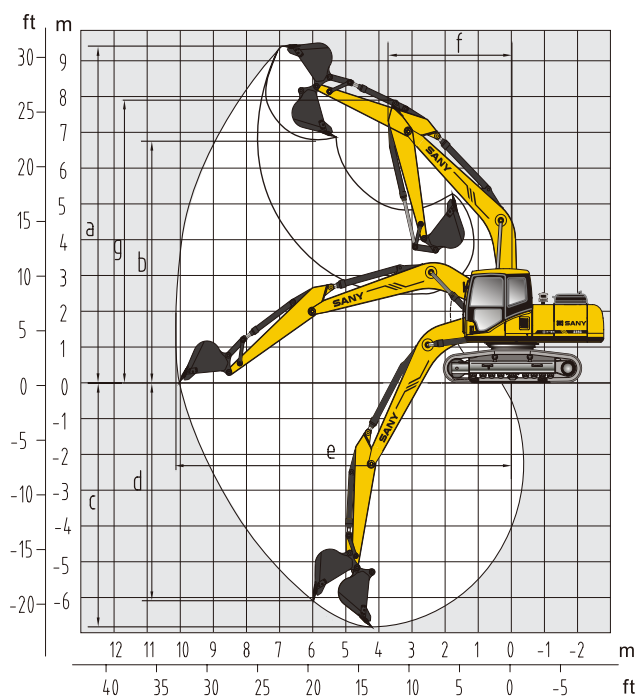
Overall Dimensions

	U.S. (ft - in)	Metric (mm)
A Transport Length	32' - 6"	9910
B Transport Width	11' - 1"	3390
C Transport Height	10' - 5"	3180
D Upper Width	8' - 11"	2710
E Cab Height	9' - 7"	2930
F Std Track Shoe Width	31.5"	800
G Track Gauge	8' - 6"	2590
H Minimum Ground Clearance	17.3"	440
I Tail Swing Radius	9' - 5"	2860
J Length Center Idler to Center Sprocket	12' - 7"	3830
K Track Length (Overall)	15' - 2"	4635
Boom Length	19' - 4"	5900
Std Arm Length	9' - 8"	2950

Machine Parameters

	U.S.	Metric
Weight	51,809 lb	23 500 kg
Rated Power	190 hp @ 2200	132 kW @ 2000
Engine Max Torque	506 lbf @ 1500	686 Nm @ 1500
Main Pump Flow	2 x 67 gal	2 x 252 liter
Swing Speed	13 rpm	13 rpm
Travel Speed	2.4 / 3.5 mph	3.8 / 5.6 km/h
Draw Bar Pull (Tractive Effort)	43,836 lbf	195 kN
Max Arm Digging Force	27,426 lbf	122 kN
Max Bucket Digging Force	39,340 lbf	175 kN
Number of Upper Rollers	2	2
Number of Lower Rollers	9	9
Fuel Tank Capacity	90 gal	340 liters
Hydraulic Tank Capacity	63 gal	239 liters
Cooling System Capacity	6.7 gal	25.2 liters
Engine Oil Capacity	6.3 gal	24 liters
Ground Pressure (800 mm Shoes)	5.2 psi	35.7 kPa

Operating Range



Operating Range

	U.S. (ft - in)	Metric (mm)
a Max Digging Height	31' - 8"	9645
b Max Dumping Height	22' - 0"	6710
c Max Digging Depth	22' - 4"	6,800
d Max Vertical Wall Digging Depth	19' - 3"	5860
e Max Digging Reach	33' - 4"	10165
f Min Swing Radius	12' - 6"	3800
g Max Height at Minimum Swing Radius	26' - 1"	7940