

SY215C

Excavator



KEY FEATURES

- Cummins QSB6.7 Tier III diesel engine provides 155 hp @ 2000 rpm and guarantees high performance
- Positive-control hydraulics with 34.3 MPa system pressure provides excellent reliability, outstanding control and high operation efficiency
- Newly designed SANY cab has maximum space, wide visibility and easy access to controls with a full-color monitor providing easy access to machine operation information
- Standard features include two-way auxiliary hydraulics and pattern-control change valve to increase productivity

SPECIFICATIONS

Power

155 hp / 116 kW

Dig Depth

21' 9" / 6630 mm

Operating Weight

47,620 lb / 21 600 kg

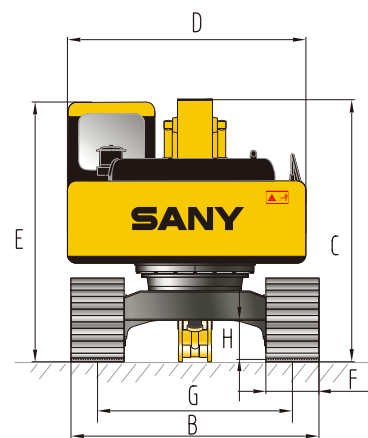
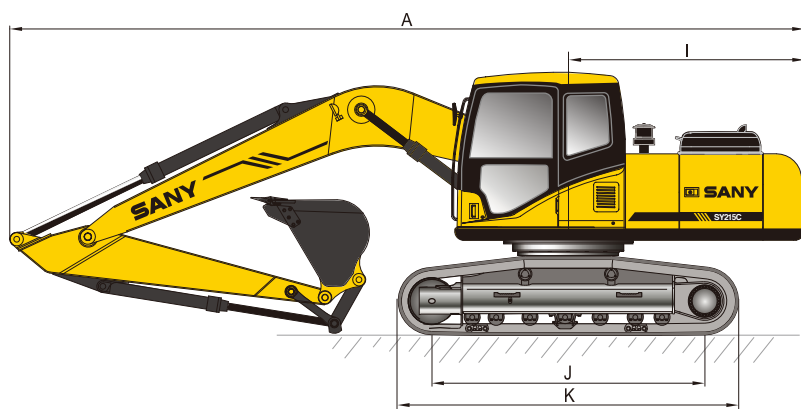
Bucket Breakout

31,080 lbf / 138 kN



SY215C Dimensions & Specifications

Overall Dimensions



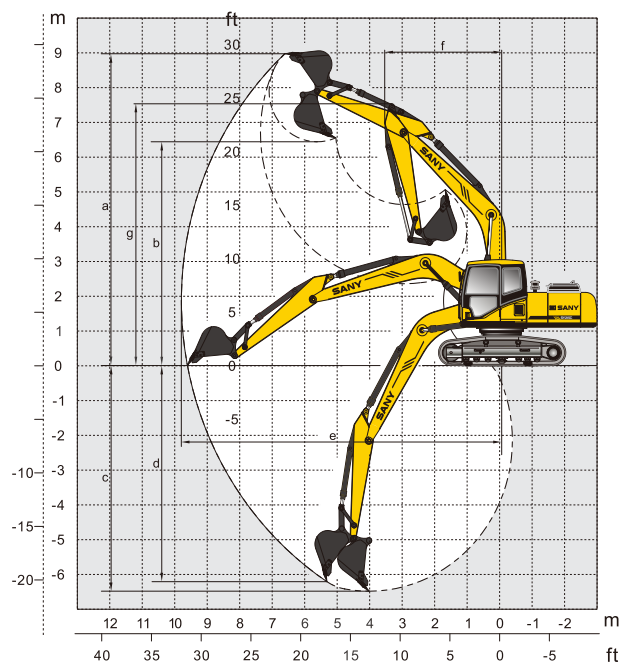
Overall Dimensions

	U.S. (ft - in)	Metric (mm)
A Transport Length	30' - 10"	9397
B Transport Width	10' - 5"	3180
C Transport Height	9' - 8"	2956
D Upper Width	8' - 11"	2710
E Cab Height	9' - 7"	2930
F Std Track Shoe Width	31.5"	800
G Track Gauge	7' - 10"	2380
H Minimum Ground Clearance	1' - 5"	440
I Tail Swing Radius	10'	2750
J Length Center Idler to Center Sprocket	11' - 11"	3640
K Track Length	14' - 7"	4445
Boom Length	18' - 8"	5700
Std Arm Length	9' - 7"	2900

Machine Parameters

	U.S.	Metric
Weight	47,620 lb	21 600 kg
Rated Power	155 hp @ 2000 rpm	116 kW @ 2000
Engine Max Torque	456 lbf @ 1500 rpm	618 Nm @ 1500
Main Pump Flow	2 x 55 gal	2 x 210 liter
Swing Speed	12.5 rpm	12.5 rpm
Travel Speed	2.0 / 3.4 mph	3.2 / 5.5 km/h
Draw Bar Pull (Tractive Effort)	40,466 lbf	180 kN
Max Arm Digging Force	22,481 lbf	100 kN
Max Bucket digging Force	31,080 lbf	138kN
Number of Upper Rollers	2	2
Number of Lower Rollers	9	9
Fuel Tank Capacity	90 gal	340 liters
Hydraulic Tank Capacity	63 gal	239 liters
Cooling System Capacity	6.2 gal	23.6 liters
Engine Oil Capacity	5.8 gal	22 liters
Ground Pressure (800 mm Shoes)	4.8 psi	33.3 kPa

Operating Range



Operating Range

	U.S. (ft - in)	Metric (mm)
a Max Digging Height	30' - 6"	9305
b Max Dumping Height	21' - 3"	6475
c Max Digging Depth	21' - 9"	6630
d Max Vertical Wall Digging Depth	19' - 7"	5980
e Max Digging Reach	32' - 5"	9885
f Min Swing Radius	11' - 11"	3630
g Max Height at Minimum Swing Radius	24' - 10"	7570